



MODEL

2AM-FCC-1

(4 Vanes, CCW Rotation)

2AM-FCW-13

(4 Vanes, CW Rotation)

Net wt. 7 lbs. (3,2 kg)

FEATURES

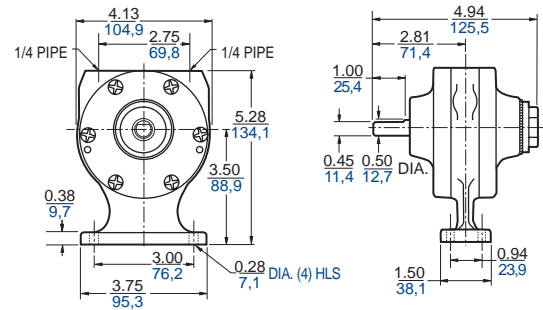
- Foot mounting
- Any plane operation
- Muffler AL445

RECOMMENDED

- Filter AH103F
- Regulator AH104R
- Gauge AA806
- Lubricator AH105L
- Oil AD220 – 1 quart (.94 litres)
- Repair kit K202 (Single Rotation)

Note on mufflers for 2AM Series:

- Plastic muffler AL445 offers enhanced sound reduction and will add approx. 5" height to the porting when installed
- Metal muffler AC980 is standard on models 2AM-NCC-16F and 2AM-NCW-7B and will add approx. 2" height when installed



2AM-NCC-16

*2AM-NCC-16F

(4 Vanes, CCW Rotation)

2AM-NCW-7A

*2AM-NCW-7B

(4 Vanes, CW Rotation)

2AM-NRV-89

(4 Vanes, Reversible)

Net wt. 6 lbs. (2,7 kg)

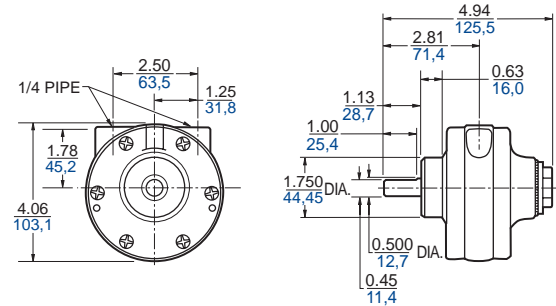
FEATURES

- Hub mounting
- Any plane operation
- Muffler AL445

***Equipped with metal muffler AC980**

RECOMMENDED

- Filter AH103F
- Regulator AH104R
- Gauge AA806
- Lubricator AH105L
- Oil AD220 – 1 quart (.94 litres)
- Repair kit K202 (Single Rotation)
- Repair kit K509 (Reversible)



2AM-NCC-43A

(4 Vanes, CCW Rotation)

2AM-NRV-90

(4 Vanes, Reversible)

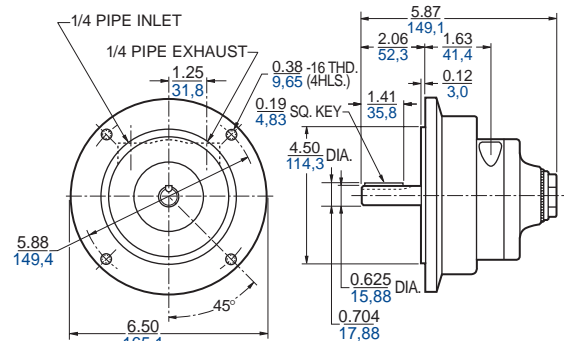
Net wt. 15 lbs. (6,8 kg)

FEATURES

- NEMA 56C mounting
- Any plane operation
- Muffler AL445

RECOMMENDED

- Filter AH103F
- Regulator AH104R
- Gauge AA806
- Lubricator AH105L
- Oil AD220 – 1 quart (.94 litres)
- Repair kit K203A (Single Rotation)
- Repair kit K510 (Reversible)





Metric Models



MODEL

2AM-ACC-88

(4 Vanes, CCW Rotation)
Flange Mount

2AM-ACC-91

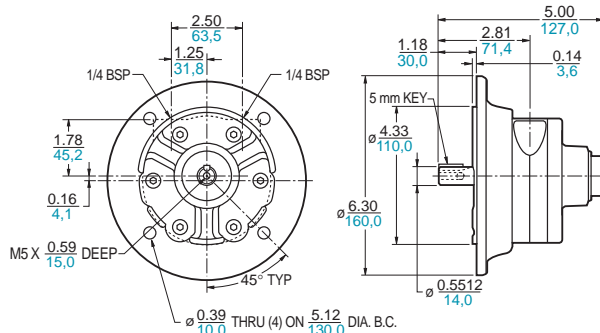
(4 Vanes, CCW Rotation)
Face Mount

2AM-ARV-92

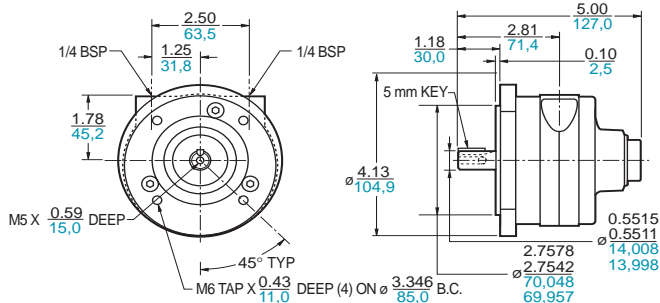
(4 Vanes, Reversible)
Flange Mount

2AM-ARV-93

(4 Vanes, Reversible)
Face Mount



Models 2AM-ACC-88/2AM-ARV-92



Models 2AM-ACC-91/2AM-ARV-93

Delivers up to 0,56 kW (¾ hp).
Speeds may be varied from 300 to 3,000 rpm. Max. recommended operating pressure 7 bar (100 psi).

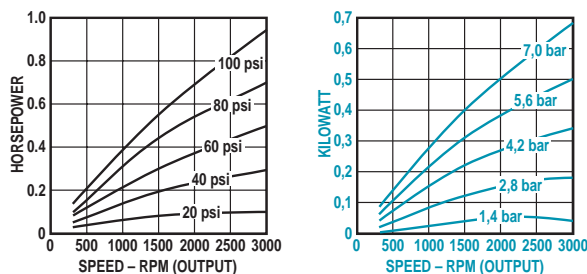
FEATURES

- IEC #72 mounting frame size:
D71 (2AM-ACC-88, 2AM-ARV-92)
D71C (2AM-ACC-91, 2AM-ARV-93)
- Any plane operation
- Muffler AL445

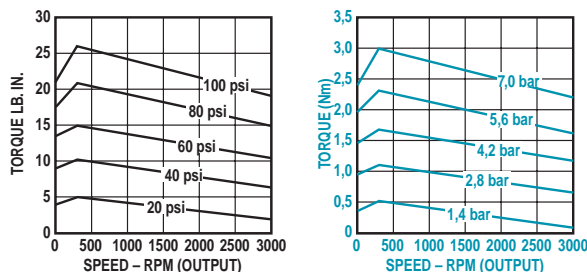
RECOMMENDED

- Repair kit K203A (Single Rotation)
- Repair kit K510 (Reversible)

Output Power vs. Speed



Torque vs. Speed



Air Consumption vs. Speed

