



Air-Powered Gearmotors

4AM Series, 10 and 15:1 reduction, 100 – 630 lbs. in. (11 – 72 Nm) torque at 30 rpm (minimum speed reduction)

MODEL

4AM-RV-75-GR20

(4 Vanes, Reversible)

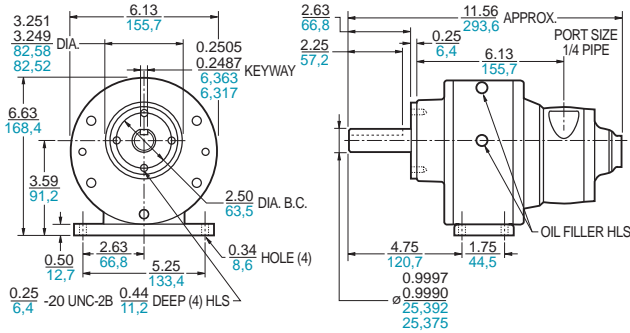
Net wt. 28 lbs. (12,6 kg)

FEATURES

- 10:1 gear reducer
- Face, foot mounting
- Horizontal or shaft down operation
- Muffler AL445 (not shown)

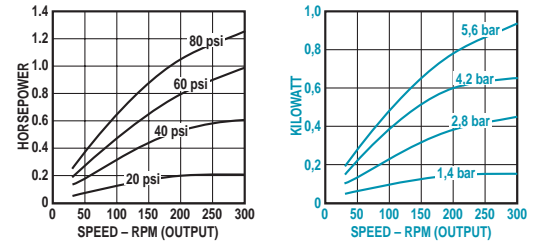
RECOMMENDED

- Filter AH103F
- Regulator AH104R
- Gauge AA806
- Lubricator AH105L
- Oil AD220 – 1 quart (.94 litres)
- Repair kit K205 (Air motor only)

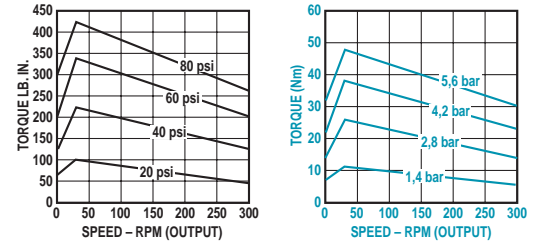


Max. allowable end thrust with 0 overhung load ranges from 200 lbs. (90,0 kg) at 300 rpm to 800 lbs. (360,0 kg) at 30 rpm. Max. overhung load with 0 end thrust ranges from 200 lbs. (90,0 kg) at 300 rpm to 600 lbs. (270,0 kg) at 30 rpm. Max. recommended pressures to 80 psi (5,6 bar).

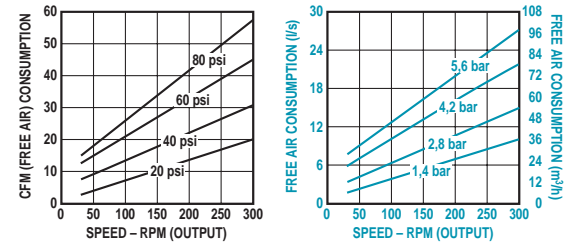
Output Power vs. Speed



Torque vs. Speed



Air Consumption vs. Speed



MODEL

4AM-RV-75-GR25

(4 Vanes, Reversible)

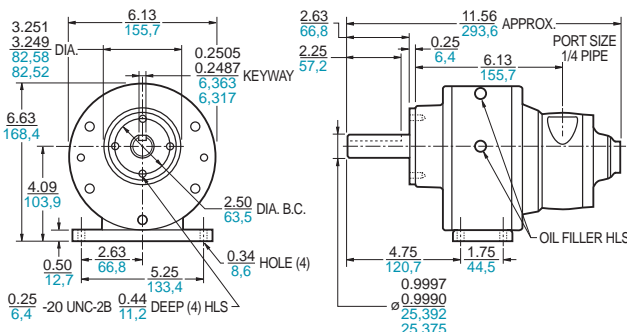
Net wt. 28 lbs. (12,6 kg)

FEATURES

- 15:1 gear reducer
- Face, foot mounting
- Horizontal or shaft down operation
- Muffler AL445 (not shown)

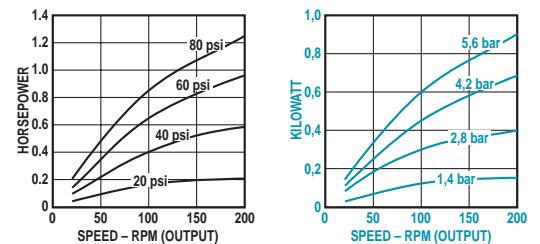
RECOMMENDED

- Filter AH103F
- Regulator AH104R
- Gauge AA806
- Lubricator AH105L
- Oil AD220 – 1 quart (.94 litres)
- Repair kit K205 (Air motor only)

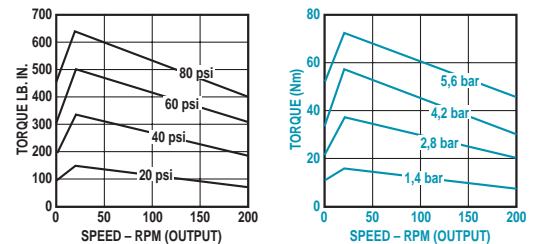


Max. allowable end thrust with 0 overhung load ranges from 250 lbs. (112,5 kg) at 200 rpm to 800 lbs. (360,0 kg) at 20 rpm. Max. overhung load with 0 end thrust ranges from 200 lbs. (90,0 kg) at 200 rpm to 600 lbs. (270,0 kg) at 20 rpm. Max. recommended pressures to 80 psi (5,6 bar).

Output Power vs. Speed



Torque vs. Speed



Air Consumption vs. Speed

